

DEVELOPMENT

MDA

AGENCY

## CONSTRUCTION OF A GROWING COMPLEX AND TURKEY MEAT PROCESSING





# ABOUT THE PROJECT

**THE PROJECT IS SUPPOSED TO BUILD A COMPLEX FOR THE CULTIVATION AND PROCESSING OF TURKEY MEAT ON PLOT OF LAND ABOUT 4,9 HECTARES, WITH AN APPROXIMATE PRODUCTION CAPACITY OF ABOUT 2500 TONS OF MEAT PER YEAR IN LIVE WEIGHT**

**Location of the project:** The Republic of Belarus, Mogilev Region, Kruglyansky district.

**Investment:** 5 500 000 USD

**Contacts:**

213188, Krugloe, Sovetskaya str, 34

+375 (02234) 79-700

email: rik-krugloe@krugloe.gov.by





# ABOUT THE PROJECT

## ADVANTAGES OF THE PROJECT >



**AVAILABILITY  
OF FREE  
LAND PLOT 4,9 HA**

**PREFERENTIAL  
MODES:**



**PROVISION  
ENGINEERING  
COMMUNICATIONS  
WITHIN 150 M.  
ARE LOCATED  
NETWORKS  
WATER AND GAS SUPPLY,  
POWER SUPPLY**

**Exemption from  
payment of customs  
duties and VAT**

**Land plot provision  
without an auction**



**TRANSPORT  
AVAILABILITY**

**Exemption from  
targeted fees  
and tax benefits**





# KRUGLYANSKY DISTRICT

## ABOUT THE DISTRICT



**14,2 thsd**  
people



**881 sq.km**  
area of  
the district

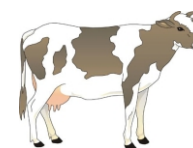
**27,2 thsd HA**  
agricultural land  
area

**24,6 thsd HA**  
arable land  
area

The economic development of the district based on agricultural production. the main directions of which are:



**DIARY  
PRODUCTION**



**CATTLE  
CULTIVATION**



**FORAGE  
HARVESTING**







Joint Stock Company  
"MOGILEV REGION DEVELOPMENT AGENCY"

**marr.by**

# PROSPECTIVE INVESTMENT PROJECTS OF MOGILEV REGION



+375 222 74 61 91  
+375 44 582 28 18



[agencymogilev@ya.ru](mailto:agencymogilev@ya.ru)



Belarus, Mogilev,  
boulevard Yubileyniy, 21



## THE AGENCY IS READY TO HELP FOREIGN INVESTORS INTERESTED UN DOING BUSINESS IN BELARUS

- Presentation information on investment opportunities, preferential regimes and benefits, industries, legislation
- Provision of current information on investment projects
- Selection and provision of information on options for land and premises
- Search for potential partners for the implementation of the investment project; organization of meetings, negotiations with potential partners to establish and support for the investor during the negotiations
- Organization of visits to Mogilev Region (development of a program of stay, assistance in obtaining a visa)
- Representation the interests of the investor in negotiations with government officials on the implementation of investment projects, as well as on improving business practices in Mogilev Region



+375 222 74 61 91  
+375 44 582 28 18



agencymogilev@ya.ru



Belarus, Mogilev,  
boulevard Yubileynyi, 21



- The following major benefits related to the implementation of the project are provided in connection with the conclusion of the investment agreement



- VAT deduction
- Exemption from VAT
- Land plots are granted for rent without auction

## INVESTMENT AGREEMENT

- The following benefits related to the implementation of the project are provided in connection with the location of the land plot



- 0% income tax VAT
- Exemption from custom import duties
- Exemption from payment of the state fee for issuing a license

## SMALL TOWNS AND RURAL AREAS

- The following benefits granted to the investors for implementation of the project in the South-Eastern region of Mogilev Region



- 10% income tax
- 24% pension insurance
- Financing the costs of creating engineering and transport infrastructure

## SOUTH-EASTERN REGION OF MOGILEV REGION



+375 222 74 61 91  
+375 44 582 28 18



[agencymogilev@ya.ru](mailto:agencymogilev@ya.ru)



Belarus, Mogilev,  
boulevard Yubileyniy, 21





Joint Stock Company  
"MOGILEV REGION DEVELOPMENT AGENCY"

**marr.by**

# WELCOME TO MOGILEV REGION!



+375 222 74 61 91  
+375 44 582 28 18



[agencymogilev@ya.ru](mailto:agencymogilev@ya.ru)



Belarus, Mogilev,  
boulevard Yubileyniy, 21