A large flock of white chickens, likely a broiler breed, is shown in a farm setting. The chickens are densely packed, with many visible in the foreground and background. They have white feathers and prominent red combs. The background is slightly blurred, showing more chickens and some yellow equipment, possibly part of a feeding system.

DEVELOPMENT

MDA

A G E N C Y

ORGANIZATION OF AN AGRICULTURAL ENTERPRISE IN KRUGLYANSKIY DISTRICT



ABOUT THE PROJECT



THERE IS A LAND PLOT WITH AN AREA OF ABOUT 20 HECTARES ON WHICH A POULTRY FARM WAS PREVIOUSLY LOCATED ON THE TERRITORY OF KRUGLYANSKIY DISTRICT. THIS LAND PLOT IS PROPOSED TO HOUSE A FARM FOR THE PRODUCTION OF LIVESTOCK AND POULTRY PRODUCTS. AT THE INITIATIVE OF THE INVESTOR, THE ISSUE OF CHANGING THE DESIGNATED PURPOSE OF THE LAND PLOT MAY BE CONSIDERED.

Location of the project: The Republic of Belarus, Mogilev Region, Kruglyansky district, area of the agro-town Rakushevo

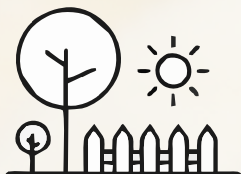
Conditions for investor entry: Creation of a new enterprise. Sales of products in domestic and foreign markets.

Investment: 6 000 000 USD



ABOUT THE PROJECT

ADVANTAGES OF THE PROJECT >



**AVAILABILITY
OF A FREE
LAND PLOT**

**PREFERENTIAL
MODES:**



**AVAILABILITY OF
UTILITIES ON THE
TERRITORY OF THE
SITES, OR IN THE
IMMEDIATE VICINITY:
POWER SUPPLY,
ACCESS ROADS.**

**Exemption from
payment of customs
duties and VAT**

**Land plot provision
without an auction**



**TRANSPORT ACCESSIBILITY:
REMTENESS FROM
THE ROAD OF REPUBLICAN
SIGNIFICANCE R121,
TOLOCHIN-KRUGLOYE-
NEZHKOV IS 5 KM,
THE TRANSPORT RAILWAY
JUNCTION TOLOCHIN IS 20 KM**

**Exemption from
targeted fees
and tax benefits**



KRUGLYANSKY DISTRICT

ABOUT THE DISTRICT



14,2 thsd
people



881 sq.km
area of
the district

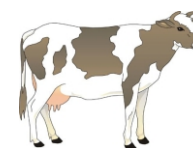
27,2 thsd HA
agricultural land
area

24,6 thsd HA
arable land
area

The economic development of the district based on agricultural production. the main directions of which are:



DIARY
PRODUCTION



CATTLE
CULTIVATION



FORAGE
HARVESTING



PROSPECTIVE INVESTMENT PROJECTS OF MOGILEV REGION



+375 222 74 61 91
+375 44 582 28 18



agencymogilev@ya.ru



Belarus, Mogilev,
boulevard Yubileyniy, 21

THE AGENCY IS READY TO HELP FOREIGN INVESTORS INTERESTED UN DOING BUSINESS IN BELARUS

- Presentation information on investment opportunities, preferential regimes and benefits, industries, legislation
- Provision of current information on investment projects
- Selection and provision of information on options for land and premises
- Search for potential partners for the implementation of the investment project; organization of meetings, negotiations with potential partners to establish and support for the investor during the negotiations
- Organization of visits to Mogilev Region (development of a program of stay, assistance in obtaining a visa)
- Representation the interests of the investor in negotiations with government officials on the implementation of investment projects, as well as on improving business practices in Mogilev Region



+375 222 74 61 91
+375 44 582 28 18



agencymogilev@ya.ru



Belarus, Mogilev,
boulevard Yubileynyi, 21

- The following major benefits related to the implementation of the project are provided in connection with the conclusion of the investment agreement



- VAT deduction
- Exemption from VAT
- Land plots are granted for rent without auction

INVESTMENT AGREEMENT

- The following benefits related to the implementation of the project are provided in connection with the location of the land plot



- 0% income tax VAT
- Exemption from custom import duties
- Exemption from payment of the state fee for issuing a license

SMALL TOWNS AND RURAL AREAS

- The following benefits granted to the investors for implementation of the project in the South-Eastern region of Mogilev Region



- 10% income tax
- 24% pension insurance
- Financing the costs of creating engineering and transport infrastructure

SOUTH-EASTERN REGION OF MOGILEV REGION



+375 222 74 61 91
+375 44 582 28 18



agencymogilev@ya.ru



Belarus, Mogilev,
boulevard Yubileyniy, 21



Joint Stock Company
"MOGILEV REGION DEVELOPMENT AGENCY"

marr.by

WELCOME TO MOGILEV REGION!



+375 222 74 61 91
+375 44 582 28 18



agencymogilev@ya.ru



Belarus, Mogilev,
boulevard Yubileyniy, 21